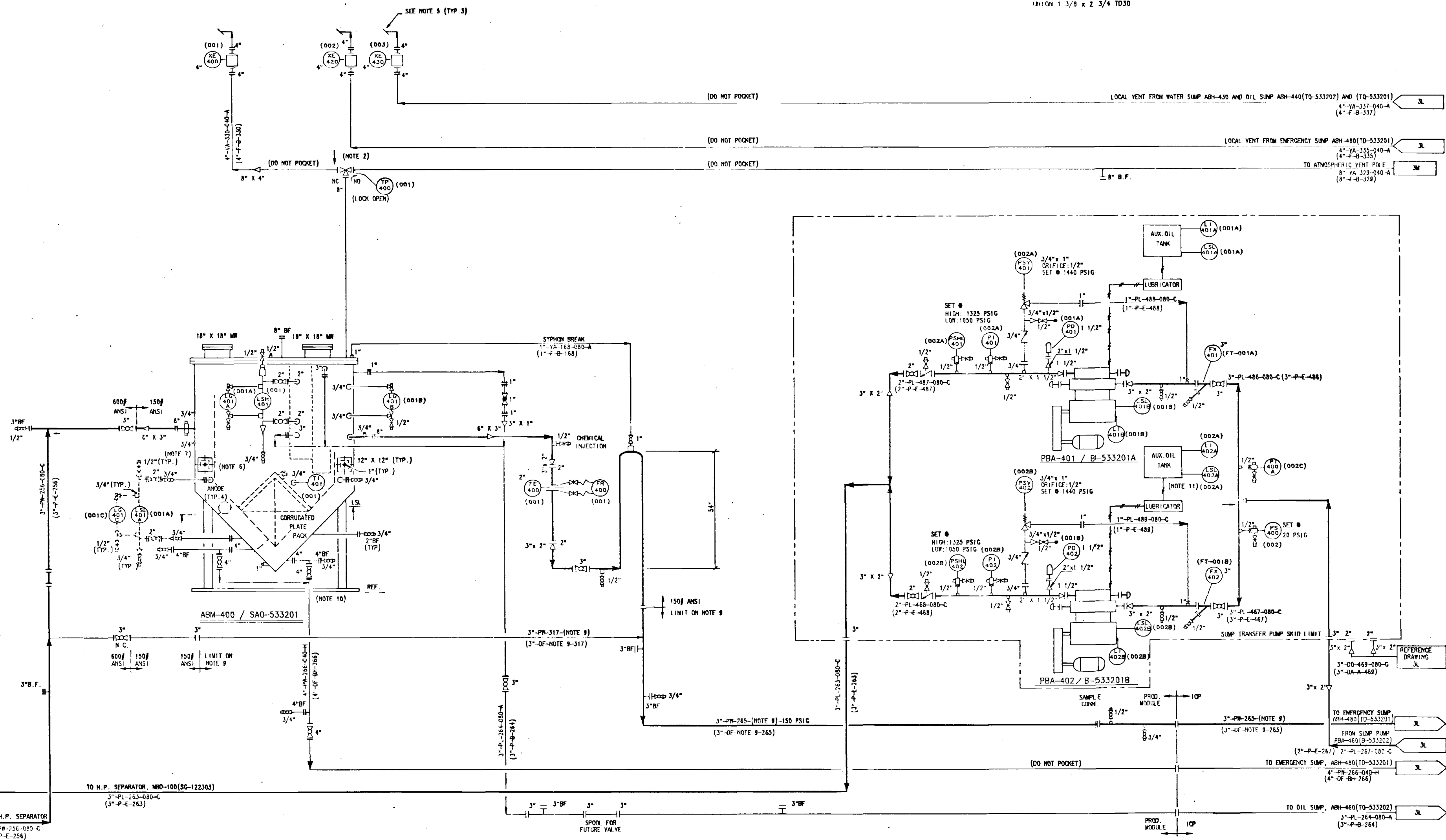


ABM-400 / SAO-533201  
CPI  
SINGLE PACK-3.3 PSIG W.P.  
5 PSIG TEST

PBA-401 & PBA-402 / B-533201A & B-533201B  
SUMP TRANSFER PUMPS  
1275 PSIG DISCHARGE  
100PM EACH  
15 BHP EACH  
UNION 1 3/8 x 2 3/4 TD30



- NOTES:
- SEE FLOW SHEET LEGEND FOR GENERAL NOTES.
  - INSTALL THREE WAY VALVE WITH PROCESS COMMON PORT TOWARD VESSEL (CPI).
  - NOT REQUIRED.
  - NOT USED.
  - ALL LOCAL VENTS ROUTED TO A SAFE LOCATION 50 FT. ABOVE UPPER DECK. LOCAL VENTS ARE PROVIDED FOR VENTING OF EQUIPMENT PRIOR TO MAINTENANCE AND ARE NOT INTENDED FOR VENTING OF CPI DURING NORMAL OPERATIONS.

- SAND CLEAN-OUT TYPICAL WITH 1" 6000J COUPLING PLUGGED.
- 3/4" SAMPLE CONNECTION TYPICAL TWO (2).
- NOT USED.
- ALL WATER PIPING BETWEEN THE CPI AND OVERBOARD TO BE REINFORCED FLANGED FIBERGLASS (BONSTRAND 2000M OR PECTEN APPROVED EQUAL). GASKETS SHALL BE FULL FACED BUNA-N RUBBER. BUNA-N FILLER SHIMS SHALL ALSO BE PROVIDED TO MATCH RAISED FACE VALVES AND FLANGES TO THE FLAT FACE FIBERGLASS FLANGES.
- USE ATMOSPHERIC VENT WHEN DRAINING CPI.

- PUMP SEAL LUBRICATOR IS A MEGA MODEL "SS" 4PT, 3/4" AND EQUIPPED WITH A OIL LEVEL CONTROLLER (1 AMP @ 120V).

- PECTEN IDENTIFICATION NUMBERS INSIDE BRACKET ( ). ALL PECTEN INSTRUMENT IDENTIFICATION NUMBERS INCLUDE 5332 AS A PREFIX.

REVISION				RELEASED ONLY FOR:				PECTEN REVIEW			
NO.	DATE	BY	CHKD	NO.	DATE	BY	CHKD	NO.	DATE	BY	CHKD
1	7/92	PES		1	5/90	PES		1	5/90	PES	
2	7/92	PES		2	6/88	PES		2	6/88	PES	
3	7/92	PES		3	6/88	PES		3	6/88	PES	
4	7/92	PES		4	6/88	PES		4	6/88	PES	
5	7/92	PES		5	6/88	PES		5	6/88	PES	
6	7/92	PES		6	6/88	PES		6	6/88	PES	
7	7/92	PES		7	6/88	PES		7	6/88	PES	
8	7/92	PES		8	6/88	PES		8	6/88	PES	
9	7/92	PES		9	6/88	PES		9	6/88	PES	
10	7/92	PES		10	6/88	PES		10	6/88	PES	
11	7/92	PES		11	6/88	PES		11	6/88	PES	
12	7/92	PES		12	6/88	PES		12	6/88	PES	
13	7/92	PES		13	6/88	PES		13	6/88	PES	
14	7/92	PES		14	6/88	PES		14	6/88	PES	
15	7/92	PES		15	6/88	PES		15	6/88	PES	
16	7/92	PES		16	6/88	PES		16	6/88	PES	
17	7/92	PES		17	6/88	PES		17	6/88	PES	
18	7/92	PES		18	6/88	PES		18	6/88	PES	
19	7/92	PES		19	6/88	PES		19	6/88	PES	
20	7/92	PES		20	6/88	PES		20	6/88	PES	
21	7/92	PES		21	6/88	PES		21	6/88	PES	
22	7/92	PES		22	6/88	PES		22	6/88	PES	
23	7/92	PES		23	6/88	PES		23	6/88	PES	
24	7/92	PES		24	6/88	PES		24	6/88	PES	
25	7/92	PES		25	6/88	PES		25	6/88	PES	
26	7/92	PES		26	6/88	PES		26	6/88	PES	
27	7/92	PES		27	6/88	PES		27	6/88	PES	
28	7/92	PES		28	6/88	PES		28	6/88	PES	
29	7/92	PES		29	6/88	PES		29	6/88	PES	
30	7/92	PES		30	6/88	PES		30	6/88	PES	

PECTEN BRAZIL EXPLORATION CO.

MECHANICAL FLOWSHEET  
CPI AND SUMP TRANSFER PUMPS  
MERLUZA PLATFORM

DRAWN: JIM DATE: 01/21/88  
CHECKED: JIM DATE: 01/21/88  
DESIGNED: JIM DATE: 01/21/88  
REVIEWED: JIM DATE: 01/21/88